

Graz, Austria: 30km/h case study

1992

GRAZ IS THE FIRST CITY IN EUROPE TO BRING IN SPEED LIMITS FOR THE WHOLE CITY

30

FOR RESIDENTIAL AND SIDE ROADS

50

FOR PRIORITY ROADS



INITIALLY ONLY 4 OUT OF 10 RESIDENTS SUPPORTED THE PLAN

WITHIN 6 MONTHS, SERIOUS ACCIDENTS HAD REDUCED BY

24%



BUT AFTER TWO YEARS THAT NUMBER HAD NEARLY DOUBLED

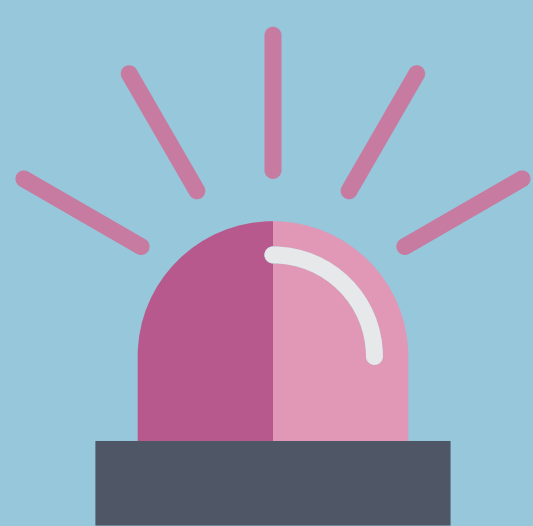


BY 2003

80%

OF CITY STREETS WERE SET AT 30KM/H

AND 80% OF ACCIDENTS WERE HAPPENING ON THE 50KM/H ROADS



WHEN SPEED ENFORCEMENT BECAME LAX, THE NUMBER OF ACCIDENTS ROSE... SO SPEED CONTROLS WERE REINTRODUCED

KEY LESSONS:



PEOPLE RESIST CHANGE INITIALLY UNTIL THEY EXPERIENCE THE BENEFITS IN THE REAL WORLD



ONGOING SPEED ENFORCEMENT IS NECESSARY



ACCIDENTS OCCUR LESS OFTEN ON SLOWER STREETS